

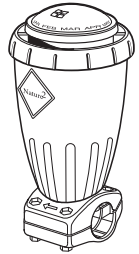


ZODIAC



EXPRESS[™]
*Mineral Sanitizers
for Pools*

FOR INGROUND POOLS AND ABOVEGROUND POOLS



Installation and Operating Manual

IMPORTANT

Pool Owner, save this manual!

Builders, leave this manual with the pool owner!

Thank you for purchasing a Nature² Express pool sanitizer. Please take a moment to read through the entire manual before installing your Nature² Express.

Nature² Express has been designed to sanitize inground and aboveground swimming pools of up to 25,000 gallons. If your pool is larger than 25,000 gallons do not install this unit, but ask your pool professional about a Nature² "G" or "A" model vessel system.

Safety Instructions Important Information Please read prior to installation

⚠ ATTENTION

Failure to heed the following warnings can result in permanent injury, electrocution or drowning.

ELECTRICAL HAZARD

- Severe shock or injury will likely occur as a result of a drill or drill cord coming in contact with water. Never allow electric drill or drill cord to come in contact with water. Only plug drill into a Class A (5 Milliampere Trip) protected Ground Fault Circuit Interrupter (GFCI) in accordance with the National Electrical Code Section 680. Please see your drill owner's manual for further safety precautions.

EQUIPMENT UNDER PRESSURE

- Always turn pump off prior to installing or changing Nature² cartridge. Your pump/filter system is operated under pressure and the pressure must be released before you begin work. Please see your pump/filter owner's manual for further instructions.

PREVENT CHILD DROWNING

- Do not let anyone, especially small children, sit, step, lean or climb on any equipment installed as part of your pool's operational system. Locate the components of your operational system at least 3 feet from the pool so children cannot use the equipment to access the pool and be injured or drown.

The Nature² Pool Sanitizer is designed for residential swimming pools only.

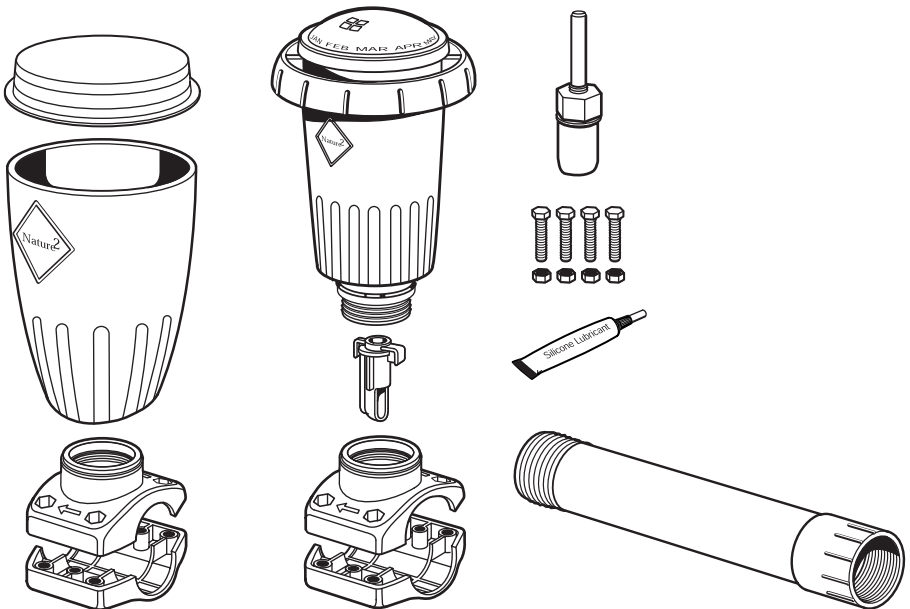
Contents

	Page
Safety Instructions	1
Installation	2
Provide Filtration/Circulation	6
Troubleshooting	6
Replacing the Nature ² Express Cartridge	6
Winterizing	7
Limited Warranty	8

Installation

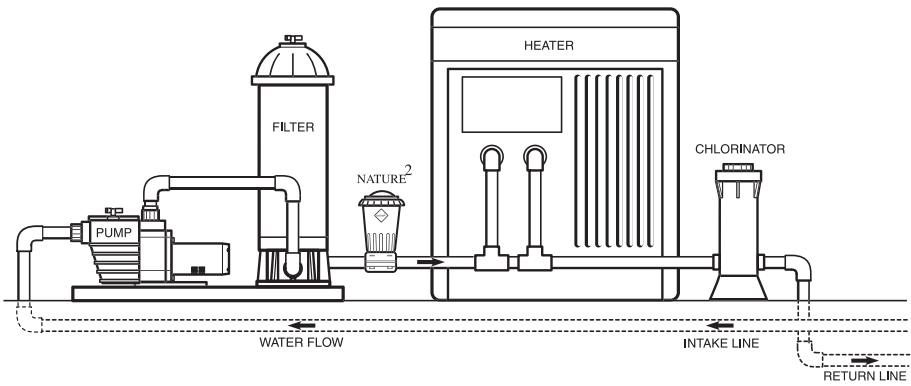
Nature² Express easily installs on your pools return line. You will need to use a cordless or electric drill to install the vessel.

Nature² Express consists of the following parts: (1) 2" clamp assembly w/gasket (I/G only), (1) 1 1/2" clamp assembly w/gasket, (1) outer housing, (1) flow diverter, (1) Express cartridge, (4) nuts and bolts, (1) winterizing cap, (1) hole saw and (1) silicone tube, (1) rigid PVC adapter (A/G only)



1 Decide where to install the Nature² vessel. It must be installed:

- after the filter on the main return to the pool,
- before or after the heater (downstream from a solar heating system),
- before any chemical dispenser or the discharge of an off-line chemical dispenser.



2 Locate the return line. You will need an area of approximately 6" to install your Nature² Express.

3 Turn OFF the pool pump and close any valves.

FOR ABOVEGROUND POOLS:

Aboveground pools are often plumbed with flexible or corrugated pipe.

These systems will require the use of the rigid PVC adapter included with Nature² Express for aboveground pools. This adapter will fit most filtration systems.

- Disconnect the return hose and fitting from the filter.
- Wrap tape around threads of Nature² PVC adapter.
- Thread the PVC adapter into the outlet port in the filter - proceed to step 4 below.



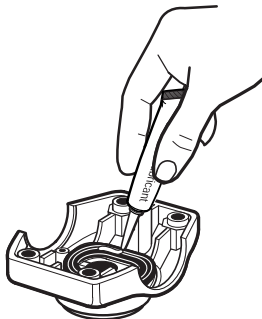
ATTENTION

Always turn pump off prior to installing or changing Nature² cartridge. Your pump/filter system is operated under pressure and the pressure must be released before you begin work. Please see your pump/filter owner's manual for further instructions.

Note: If your pool filtration equipment is below the water level of the pool, you will either need to close the return valve or use winterizing plugs installed at the skimmer and return fittings to prevent excessive water loss. Contact your authorized Nature² dealer or our Technical Services Department at 1-888-537-6657 ext. 350 for more information.

4 Choose the clamp assembly, (1 1/2" or 2") that fits the size piping on your return line (Nature² Express for aboveground pools comes with only the 1 1/2" clamp assembly).

5 Apply a small bead of silicone lubricant around the saddle clamp gasket.



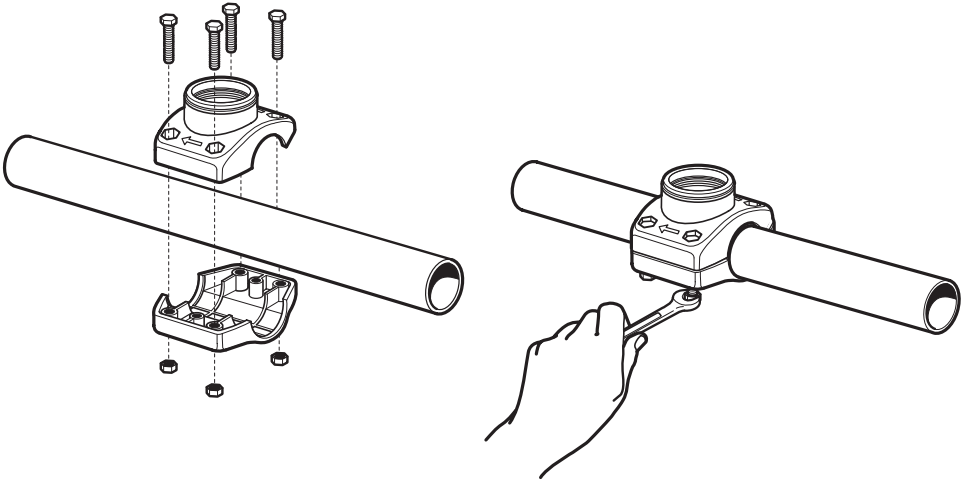


ATTENTION

Install your Nature² Express on schedule 40 PVC pipe only. Failure to heed this warning can result in equipment failure.

- 6 Position the clamp assembly** on the pipe, with the arrow pointing in the direction of the flow of water and hand tighten the nuts and bolts. Tighten nuts an additional 1/4 turn using a wrench or socket. Do not over-tighten!

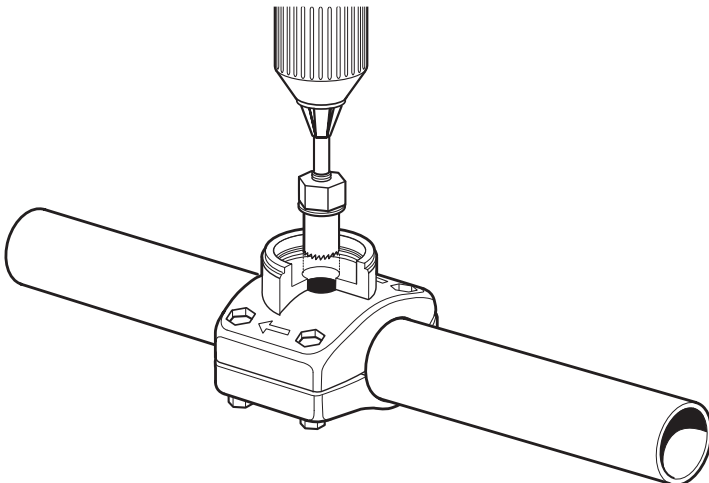
Note: The 2 halves of the 1 1/2" clamp assembly will not touch when properly assembled. A gap of roughly 1/16" is normal.



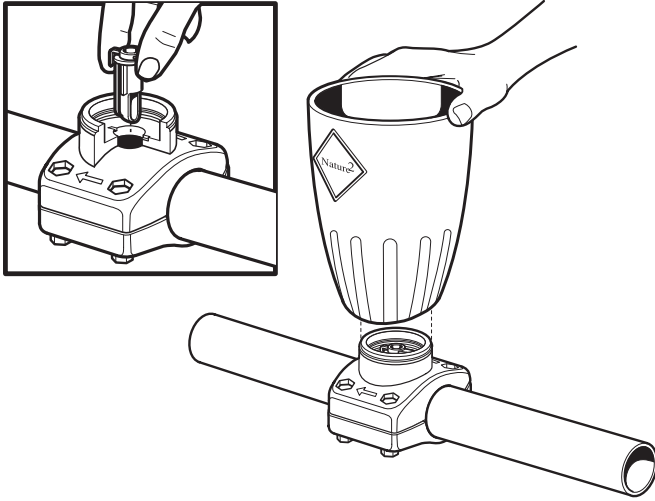
ATTENTION

Severe shock or injury will likely occur as a result of a drill or drill cord coming in contact with water. Never allow electric drill or drill cord to come in contact with water. Only plug drill into a Class A (5 Milliampere Trip) protected Ground Fault Circuit Interrupter (GFCI) in accordance with the National Electrical Code Section 680. Please see your drill owner's manual for further safety precautions.

- 7 Insert the hole saw into a drill.** Using the hole in the top half of the clamp assembly as a guide, cut a hole in the pipe.

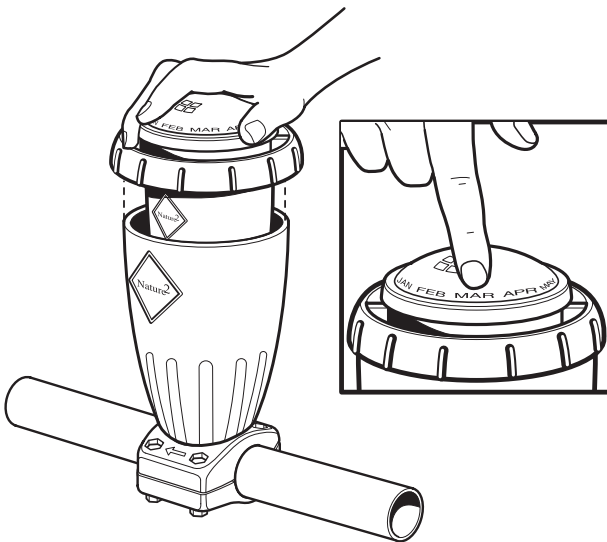


- 8 Insert the flow diverter** into the clamp assembly and snap it into place. Snap the outer housing onto the clamp assembly.



- 9 Spread silicone around the o-ring** just above cartridge threads.

- 10 Thread the Nature² Express cartridge into the clamp assembly.** Set the date reminder.



- 11 Open any valves that you closed.**

- 12 Turn on your pool pump and verify that there are no leaks.** The small pellets inside the cartridge dome provide evidence of water flow through your Nature² Express.

If a leak is present, turn off pump, close valves and remove Nature² Express and assembly. Remove any PVC burrs, replace clamp assembly without over-tightening and re-install cartridge.

- 13 Refer to your Nature² Cartridge Owner's Manual for cartridge start up procedures.**

Provide Filtration/Circulation

To manage:

You need to:

Circulation

Follow the manufacturer's directions for keeping the circulating pump in good working order and **operate it at least six hours a day.**

Consult your Nature² dealer for optimum run times.

Filtration

Check the pool's filter periodically and clean it as recommended by the manufacturer.

Troubleshooting Guide **Consult your Nature² Dealer for additional assistance or call 1-888-786-7797.**

EQUIPMENT

Problem: No flow to Nature² Express

What to look for: Dirty filter (one indication: pressure is 8-10 psi higher than normal)

Treatment: Clean or backwash filter so operating pressure is always within 7 psi of a new filter

LEAK

What to look for: Dripping from clamp area

- Treatment:**
- 1 Re-lube gasket and Cartridge O-ring
 - 2 Make sure nuts & bolts are tightened evenly and not over-tightened

Replacing the Nature² Express Cartridge

Use the month indicator ring on the top of the unit to identify the date on which the cartridge should be replaced. A Nature² Express cartridge lasts six months.

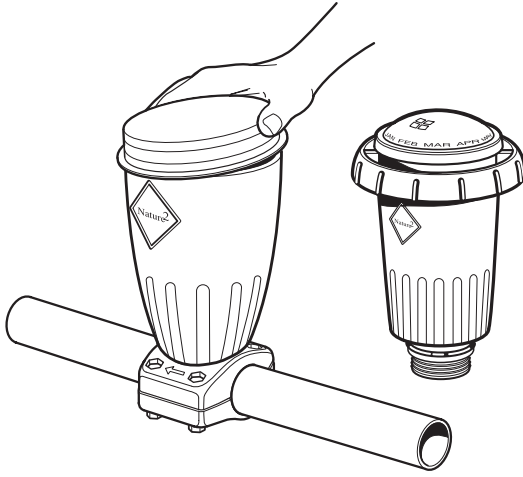
To replace the cartridge:

- 1 **Shut off your pool's pump and filter.**
- 2 **Close any valves between the filter and pool** to prevent draining the pool.
- 3 **Unscrew and remove the old cartridge.**
- 4 **Screw the new cartridge into housing and clamp assembly.**
- 5 **Rotate the install/replace ring** located on the top of the cartridge to the appropriate month.
- 6 **Open any valves that were closed** to isolate the Nature² Express.
- 7 **Restart your pool's pump.** Check for leaks and fix any leaking fittings.
- 8 **Follow the start up procedures** in the Nature² Express Cartridge Owner's Manual

Winterizing

As part of your pool winterizing process, if you close your pool, remove the Nature² Express cartridge and discard in household trash. Snap the winterizing cap on the outer housing to keep out debris.

Install a new Nature² Express cartridge when you reopen your swimming pool. Refer to your Nature² Cartridge Owner's Manual for cartridge start up procedures.



Limited Warranty

NATURE² EXPRESS LIMITED WARRANTY

The limited warranties contained within this document are the only warranties given with your Nature² Express and supercede any prior warranties. **All other warranties, expressed or implied, including the implied warranty of merchantability or the implied warranty of fitness for a particular purpose are here by disclaimed.** Our sole obligation under this warranty, and the purchaser's sole remedy, is limited to repair or replacement of the Nature² Express housing, or one of its parts. The Nature² warranty applies to the original owner only.

THE LIMITED WARRANTIES OF THE NATURE² EXPRESS HOUSING/CLAMP ASSEMBLY:

The Nature² Express housing you have purchased is warranted to be free of defects and materials and workmanship for a period of one year from the date of purchase.

EXCLUSIONS FROM WARRANTY

The Nature² Express is designed for use on inground and aboveground pools from 5,000 to 25,000 gallons. If the unit is used in any other application, the warranty is void, and the purchaser and/or pool owner releases the manufacturer from any and all claims related to the use of Nature² Express.

This warranty does not cover problems arising in whole or in part from purchaser's negligence, misuse or abuse, improper maintenance or storage, accident, improper installation, improper application, failure to follow all appropriate safety precautions, Acts of God, abnormal weather conditions, damage from plants or animals, and improper use of chemicals.

This warranty specifically excludes all incidental or consequential damages, except where state law requires them to be paid. This warranty gives you specific rights. You may have other rights that vary from state to state.

TO SUBMIT A CLAIM

Report claims to Zodiac Pool Care, Inc. by calling 1-888-537-6657. Only the original purchaser may submit a claim under this limited warranty. All claims must be accompanied by an original purchase receipt.

Nature² is a registered trademark of Zodiac Pool Care, Inc.

© Copyright 2002 Zodiac Pool Care, Inc.



Zodiac Pool Care, Inc.
2028 NW 25th Avenue
Pompano Beach, FL 33069
1-800-YES-PURE
www.nature2.com